



**SHD**<sup>®</sup>  
— I T A L I A —  
ENGINEERING TECHNOLOGIES EQUIPMENT SUPPLIES

# SURGICAL SOLUTIONS

for the healthcare sector

# SHD ITALIA

## OUR HISTORY

MEANS EXPERIENCE

# SHD



SURGICAL



I.C.U.



DIALYSIS



C.S.S.D.

For more than 30 years, SHD ITALIA designs, manufactures and installs all over the world its prefabricated modular wall systems for operating rooms, intensive care units, dialysis and sterilization departments, meeting the needs of the most demanding customers in the healthcare industry.



## 1987

Sorima Group, founded in Milan, distinguishes itself from the competition in the civic infrastructure and healthcare sectors, thanks to the successful application of the vitreous enamel steel.



## 2000

Following the success of the Sorima Group in the hospital sector, the shareholders decide to push its development by establishing a dedicated company:

**SHD ITALIA S.r.l.**



## 2016

Facility enlargement, insourcing of production plant and new corporate identity.

**SHD ITALIA**  
is an Italian Family Company



# OUR SOLUTIONS

## MEET YOUR NEEDS



### CLEAR TIMELINE

The project is designed taking into consideration all the contingencies, no matter how challenging they are. This allows to meet the deadlines and not to incur in any delay during the installation phase.

### COST EFFECTIVE SOLUTION

A modular operating room needs an initial investment which is recovered by no need of maintenance. Plus the installation is cleaner and faster compared to a traditional solution.

### EASY AND CLEAN UTILITY MAINTENANCE

Any maintenance concerning gas pipelines or electrical components is easy, clean and fast; therefore the activity of the operating room is suspended just for few hours.

### INTEGRATED AND FLEXIBLE CONSTRUCTION

Any future upgrade, no matter if structural (i.e. changing the finishing of a panel) or technological (i.e. changing the size of a monitor), is possible and fast.

# TURNKEY SOLUTION

SHD ITALIA can assist the customer from the preliminary phases of the project to its completion. This allows the customer to have a single partner who can take care of the project in all its facets, by carefully considering the high technology of all equipment and all systems involved in those areas. The 30 years experience of SHD ITALIA means to have a trustful partner with a wide range of products to meet the needs of the customer, a significant reduction of the time schedule for the supply and dispatch of all goods and consequently of the installation too.

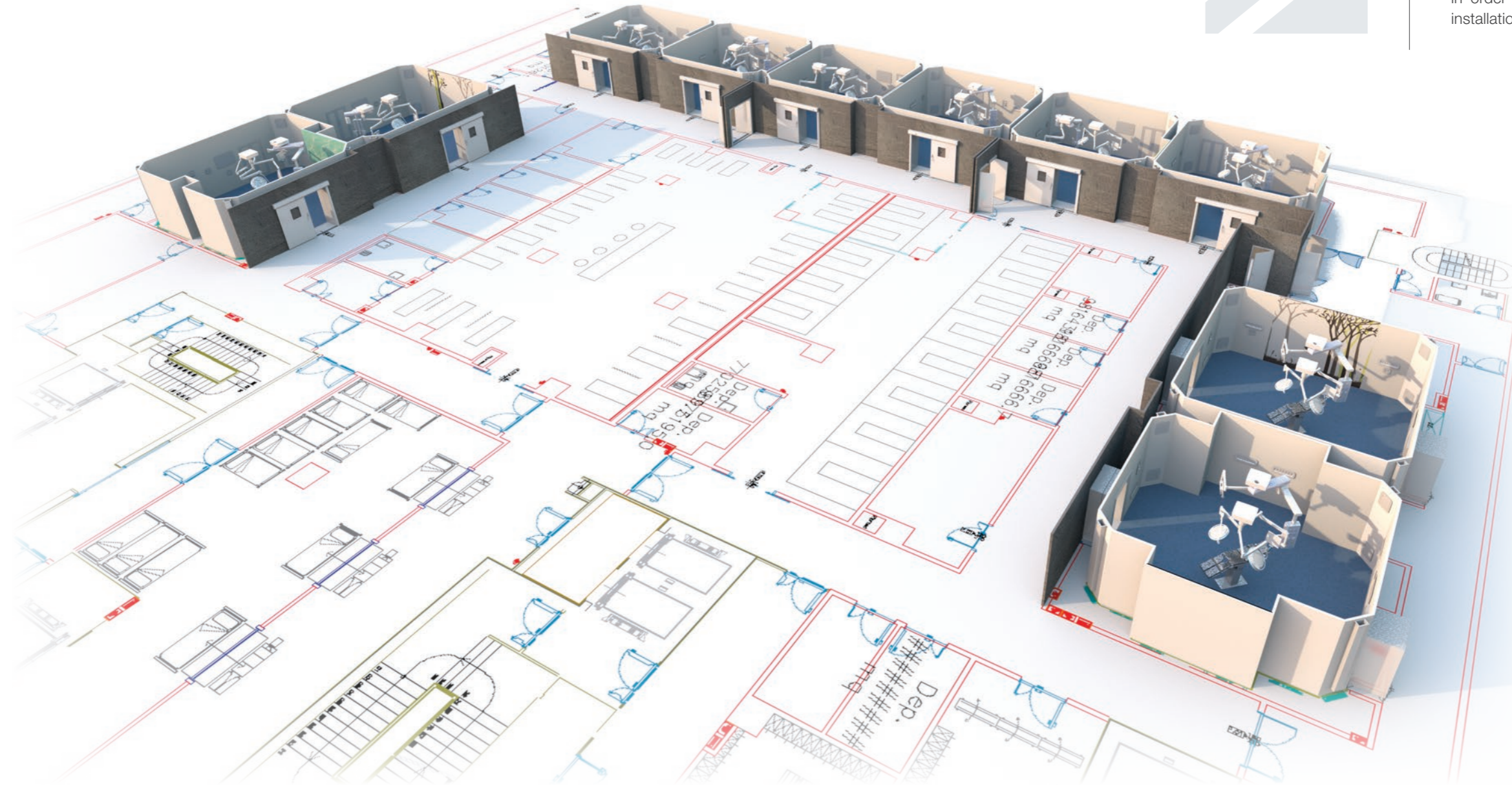
# FROM THE CONCEPT TO THE REALITY

## PROJECT AND DESIGN

# 2

### DESIGN PHASE

The processing of a 3D layout made by the technical department of SHD ITALIA gives the customer an overview of the entire project, which is as real as possible to the final result. This aspect is fundamental in order to control the design and installation phases of the project.



# 1

### PRELIMINARY PHASE

SHD ITALIA acts as a consultant during the initial phase of the project by analyzing the scope of every room and corridor, by considering all critical areas and the distribution of the systems in order to issue a quotation tailored to the customer's needs in terms of budget and performances.



# LINDO® SYSTEM

FULL-HEIGHT SOLUTION FOR OPERATING ROOMS

## BENEFITS

- Full-height and adjustable substructure in galvanized steel
- Wide range of high quality finishing panels
- Wide range of accessories integrated in the system
- Rounded corners to avoid the deposit of dust and bacteria
- Different types of joints between panels
- Several gaskets on the system to guarantee its air-tightness

# SUSTION® SYSTEM

SELF-STANDING SOLUTION FOR OPERATING ROOMS

## BENEFITS

- Self-standing and adjustable substructure
- Wide range of high quality finishing panels
- Wide range of accessories integrated in the system
- Different types of joints between panels
- Independent of any existant construction



**SHD ITALIA**  
**PREFABRICATED SYSTEMS**  
SATISFY THE MOST DEMANDING CUSTOMERS OF THE HEALTHCARE SECTOR AND ARE SUITABLE FOR NEW BUILDINGS AS WELL AS FOR REFURBISHMENTS.

# LINDO® SYSTEM

## TECHNICAL DETAILS

A "U" profile is installed along the perimeter of the operating room. The system is equipped with a double gasket in order to guarantee the air-tightness of the area.



The uprights are fixed based on a prefixed distance.

A predefined number of horizontal cross-beams is installed among the uprights; these give rigidity and stability to our system.



A cove profile is installed at floor level for hygiene purposes.

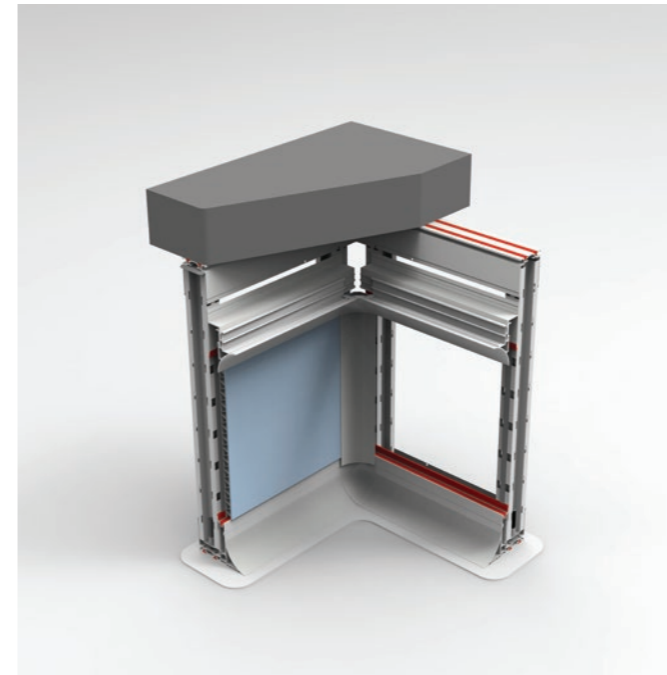
This profile is a support for the false ceiling, this would allow an higher level of hygiene to the area. Another cove profile is installed at ceiling level for hygiene purposes.



The panel is hung on the substructure without any screw. The gaskets together with the panel guarantee the complete air-tightness of the area.

# LINDO® SYSTEM

## FINISHING PANELS



**Antibacterial Asepsi SMS®**

**Lacquered Glass**

**Powder coated stainless steel**

**HPL Laminate**

**Steristeel®**

**Glassteel®**

## FRIENDLY ENVIRONMENT

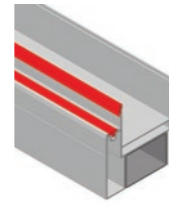
To meet customers' needs involves also the aesthetic point of view. The project will be unique and it will have more pleasant environments. Serigraphy printing and/or combination of colors in the operating rooms, adjoining rooms and corridors help to feel those areas in a different way.



# SUSTION® SYSTEM

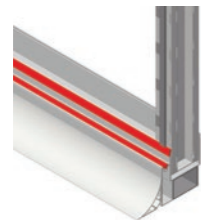
## TECHNICAL DETAILS

A tabular profile, with a "u" telescopic profile fixed on it, is installed along the perimeter of the operating room. The system is equipped with a double gasket to guarantee the air-tightness of the area.



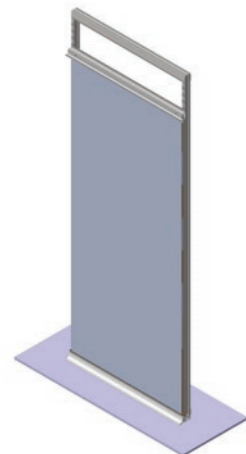
The uprights are fixed based on a prefixed distance.

A predefined number of horizontal cross-beams is installed among the uprights; these give rigidity and stability to our system.



A cove profile can be installed at floor level, this would allow a higher level of hygiene to the areas.

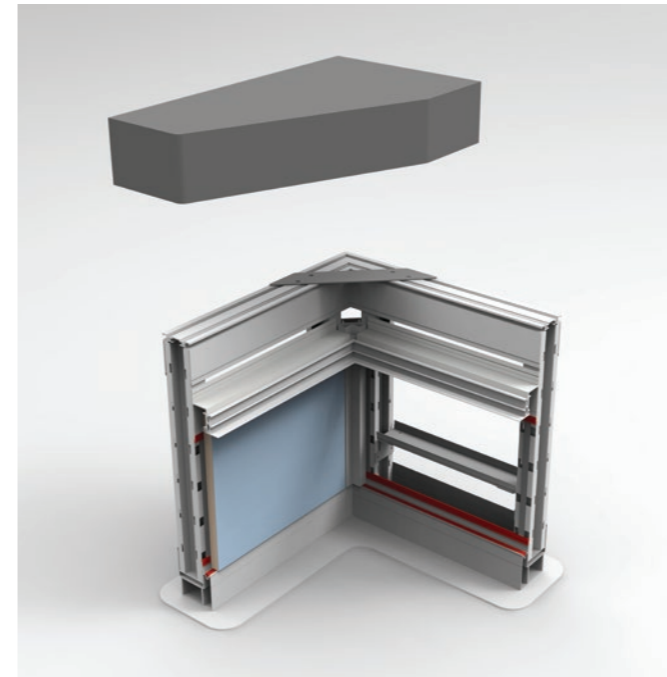
This profile serve as a support for the false ceiling, this would allow an higher level of hygiene to the areas.



The panel is hung on the substructure without any screw. The gaskets together with the panel guarantee the complete air-tightness of the area.

# SUSTION® SYSTEM

## FINISHING PANELS



**Antibacterial Asepsi SMS®**

**Lacquered Glass**

**Powder coated stainless steel**

**HPL Laminate**

**Steristeel®**

**Glassteel®**

## CUSTOMIZED ENVIRONMENT

Nowadays the customization is a more and more important detail: nothing has to look like anything else and SHD ITALIA can do that in any area of the hospital. Serigraphy printings and/or combination of colors which remind the logo of the clinic are possible too.





# TAKING CARE OF ALL DETAILS...

## ACCESSORIES



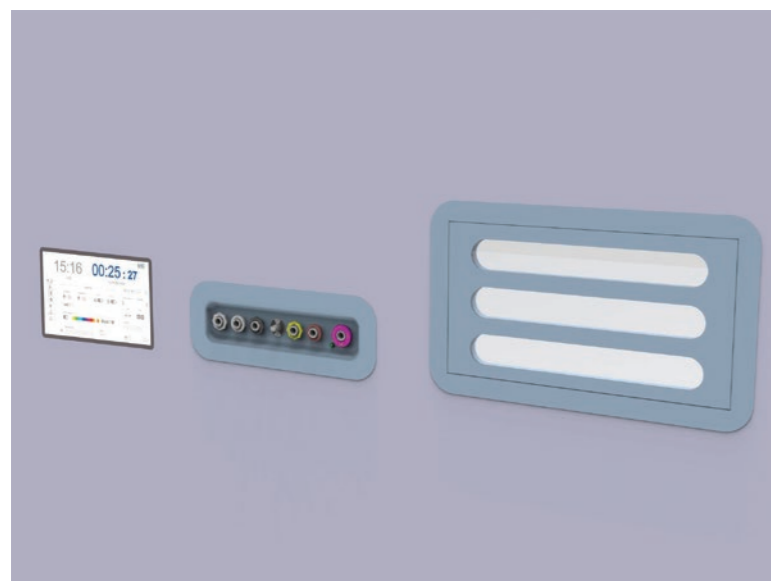
### DOORS

- Sliding or hinged
- Automatic or manual
- Air-tight or hermetically sealed
- One or two leaves
- Viewing windows with different dimensions
- X-Ray shielding
- Wide range of finishing panels and colors
- Serigraphy printings on the panel



### CABINETS

- Stainless steel or powder coated stainless steel
- Solid or glass doors
- Drawers or shelves



### WALL INTEGRATED ACCESSORIES

- Electrical connection panel
- Gas connection panel
- X-Ray viewer
- Monitor
- Instrument hatch
- Soiled material pass-through



### SURGICAL SCRUB SINKS

- One, two or three bays
- Automatic or manual
- Stainless steel or SMS®
- Sterilizer liquid dispenser
- Distributor for hand scrub brushes



# ...WITH JUST ONE PARTNER

## TURNKEY PROJECTS



### SURGICAL PENDANTS

- Surgeon and anesthesiologist
- Manual or motorized
- Single or double
- Media bridge



### OPERATING TABLES

- Wide range of accessories for every surgical discipline



### SURGICAL LAMPS

- Lights with one or two arms
- LED light with different color temperatures and light intensity adjustment
- One or two arms



### MOBILE EQUIPMENT

- Trolley
- Tray
- Stool



### TOUCHSCREEN CONTROL PANEL

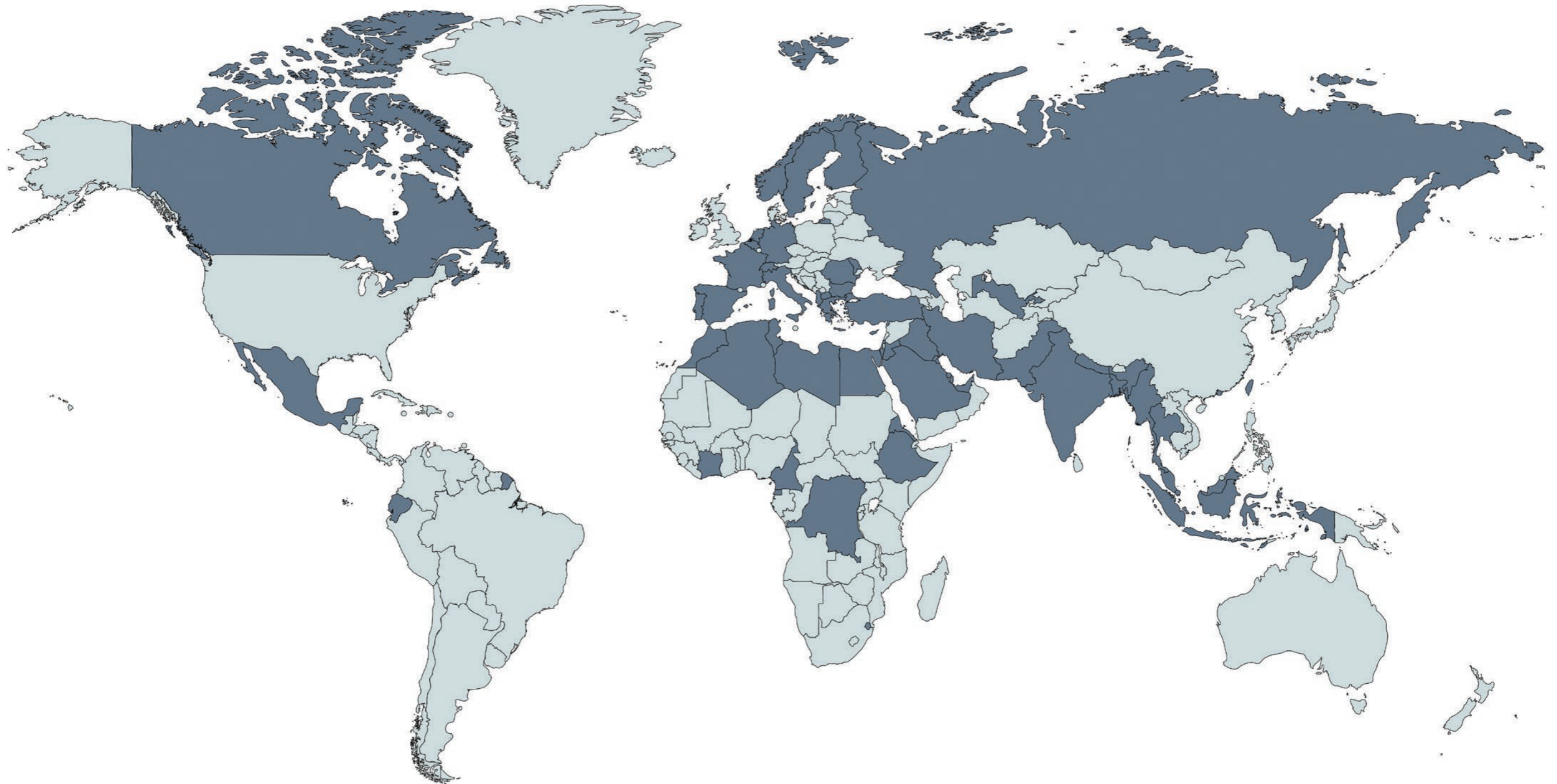
- Management and control of medical gas, HVAC and the electrical system
- Interactive display
- Usable with surgical gloves
- Easy to clean

# WE SPEAK 7 LANGUAGES

REFERENCES



MORE THAN 1000  
OPERATING ROOMS  
BUILT ALL OVER THE  
WORLD







## OUR PRODUCTS:

- Prefabricated modular systems
- Hermetically sealed suspended ceilings
- Fixed and free-standing furniture units
- Air-tight and hermetically sealed doors
- Medical equipment
- Digital audio/video and documentation management system
- Asepsi Labsteel<sup>®</sup> laboratory monolithic worktops in vitreous enamel steel



## OUR SERVICES:

- Specialist consultancy
- Project design
- Production
- Installation
- Technical assistance
- Maintenance
- Local training

MADE IN ITALY